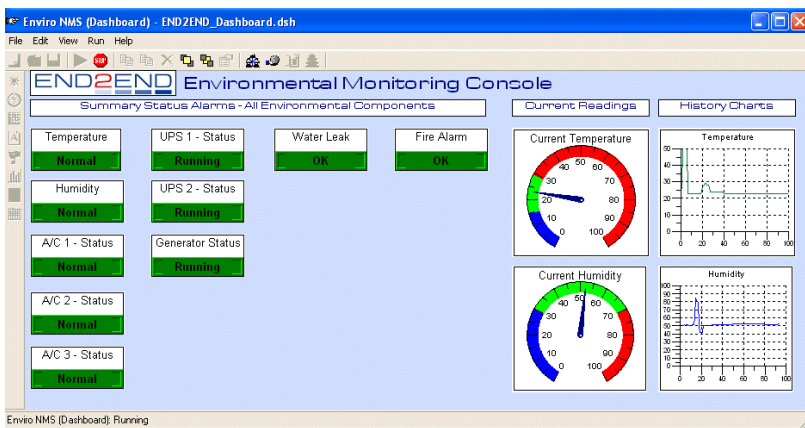


understanding
designing
implementing
supporting

Environmental Dashboard - Data Centre Monitoring Display and Alerting

END2END's latest addition to its monitoring display applications is the Environmental Dashboard. This entry-level application is configured to communicate with environmental equipment and produce SNMP alerts, ensuring that operations personnel can get any environmental issue fixed in the quickest possible time.



Display Configuration

The display is configured to match the customer's requirement with a number of pre-defined display formats from alarm indicators to analogue dials and graphs. The background and overall screen layout is designed to reflect each customer's identity

Alerting Mechanism

The Dashboard is configured with thresholds for each type of monitoring alert and can forward emails to specified operations personnel on the receipt of alarms.

- Are you responsible for the Data Centre, Computer Room or the IT infrastructure in your organisation?
- Do you need to monitor the environmental status of your mission critical Data Centre?

For more information

Phone: 0118 903 6026

email: info@end-2-endservices.co.uk

or visit www.end-2-endservices.co.uk

Dashboard

Key Features

- Traffic Light alarms for error indicators (e.g. A/C failure)
- Analogue dials for measurement indicators (e.g. temperature, humidity, etc.)
- Real time graphs to show basic trends
- Configurable to read data from equipment MIBs or receive SNMP traps
- Thresholds can be set to match the environmental specification of the room
- Emails forwarding on receipt of any alert condition

Technical Specifications

Supported on Windows 2000 or later
SNMP Compliant
Supports traps and snmp